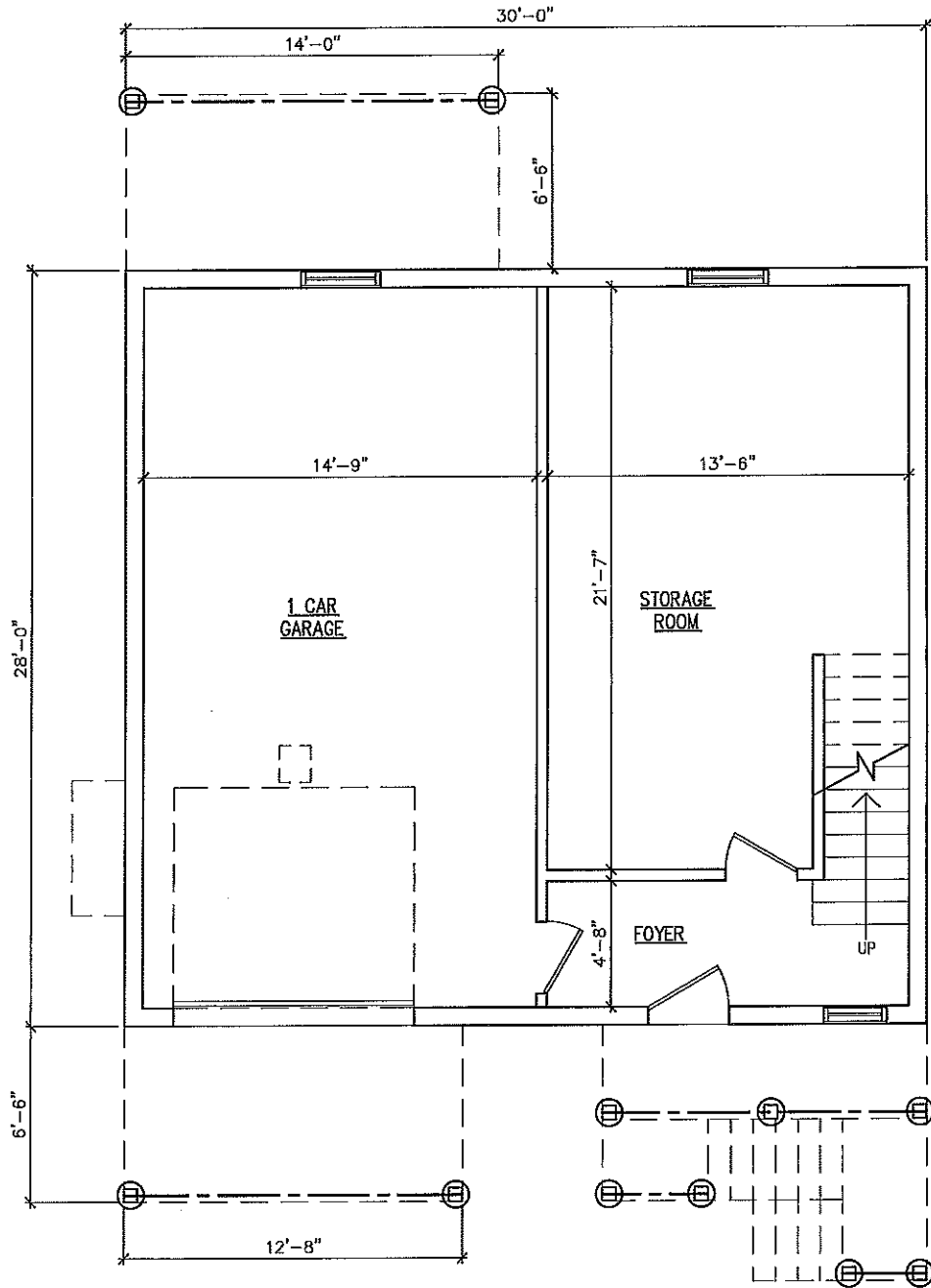
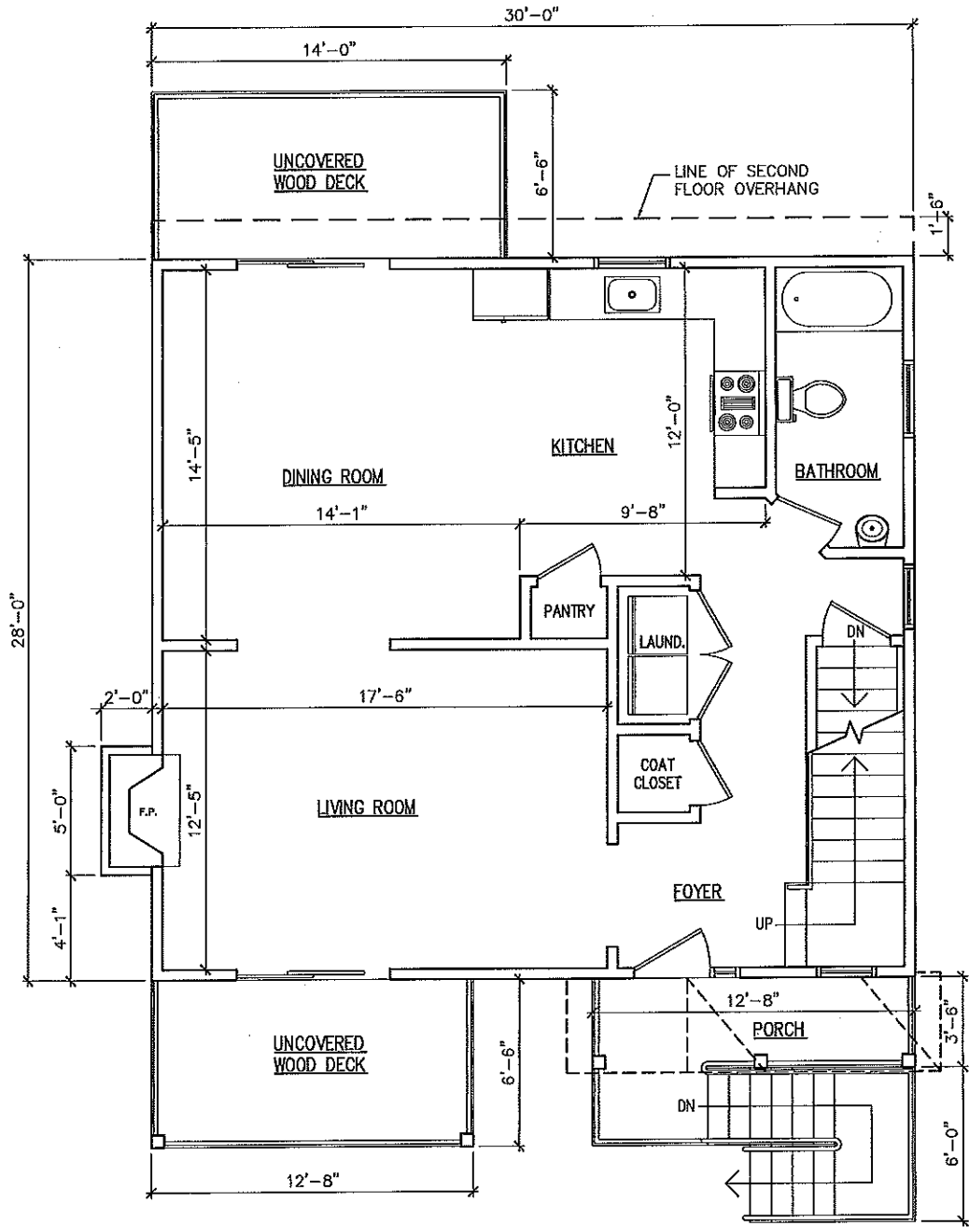


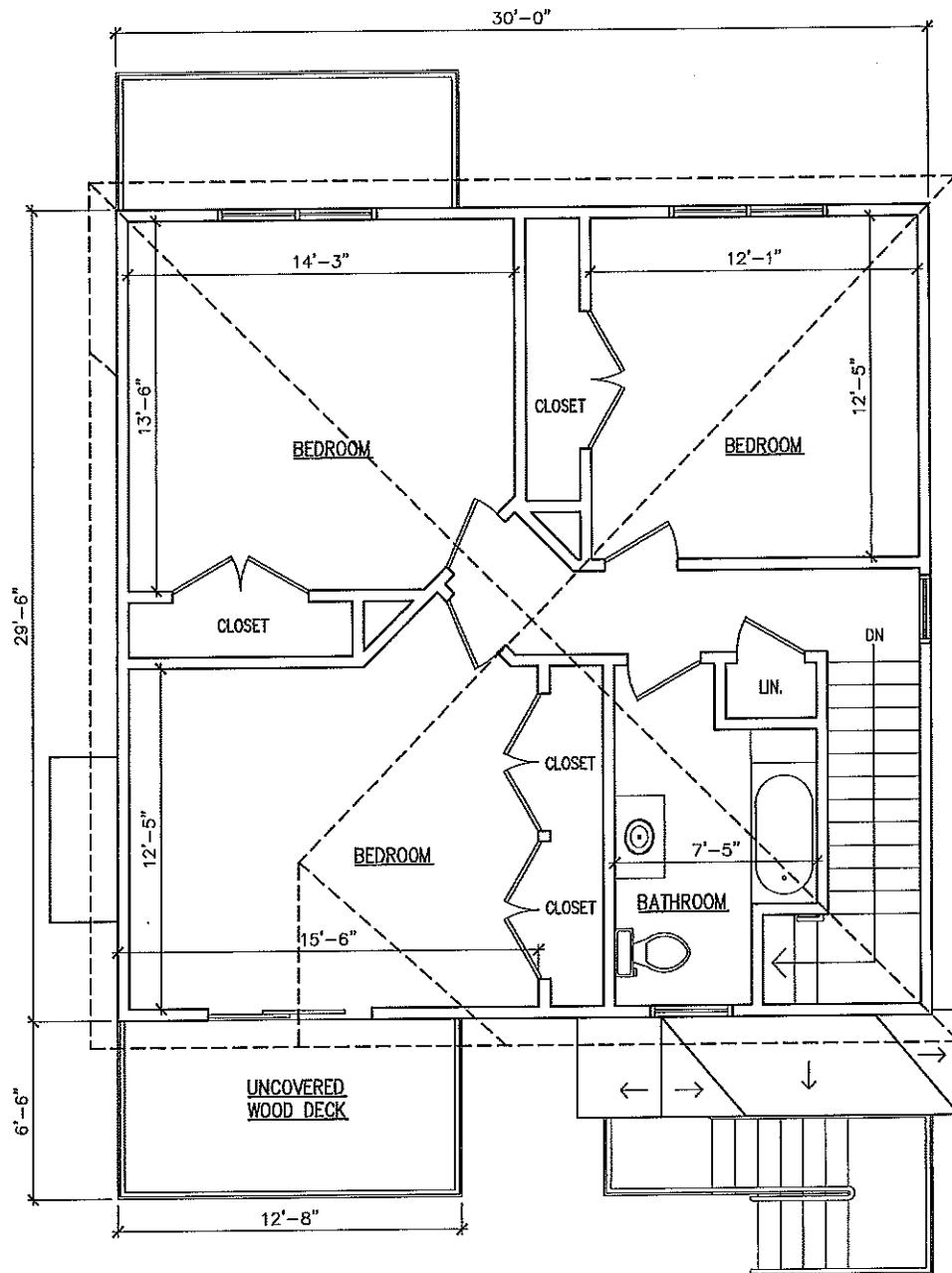
PINE STREET



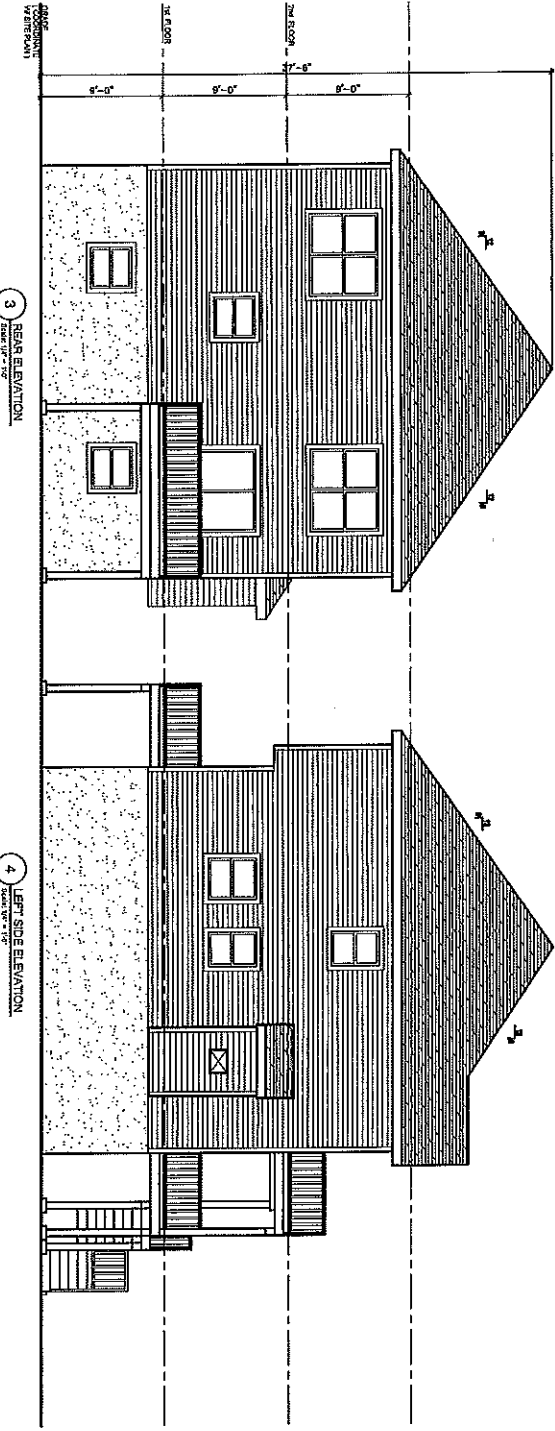
**1** GROUND FLOOR PLAN  
 Scale: 1/4" = 1'-0"



**2** FIRST FLOOR PLAN  
 Scale: 1/4" = 1'-0"

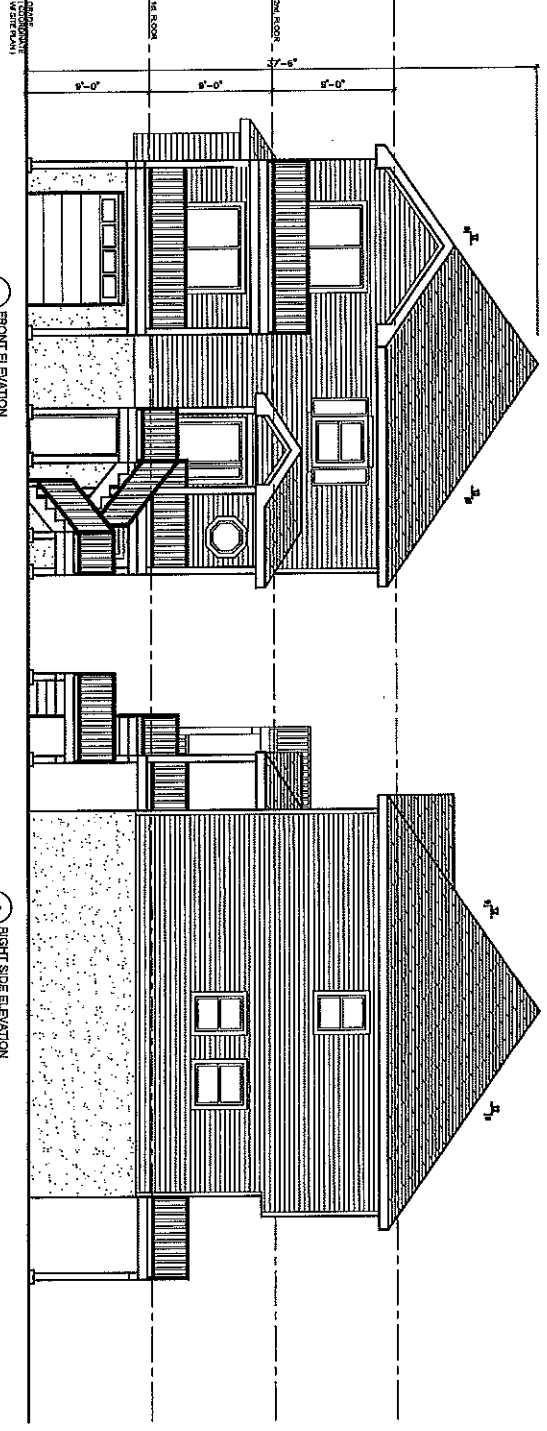


**3** SECOND FLOOR PLAN  
 Scale: 1/4" = 1'-0"



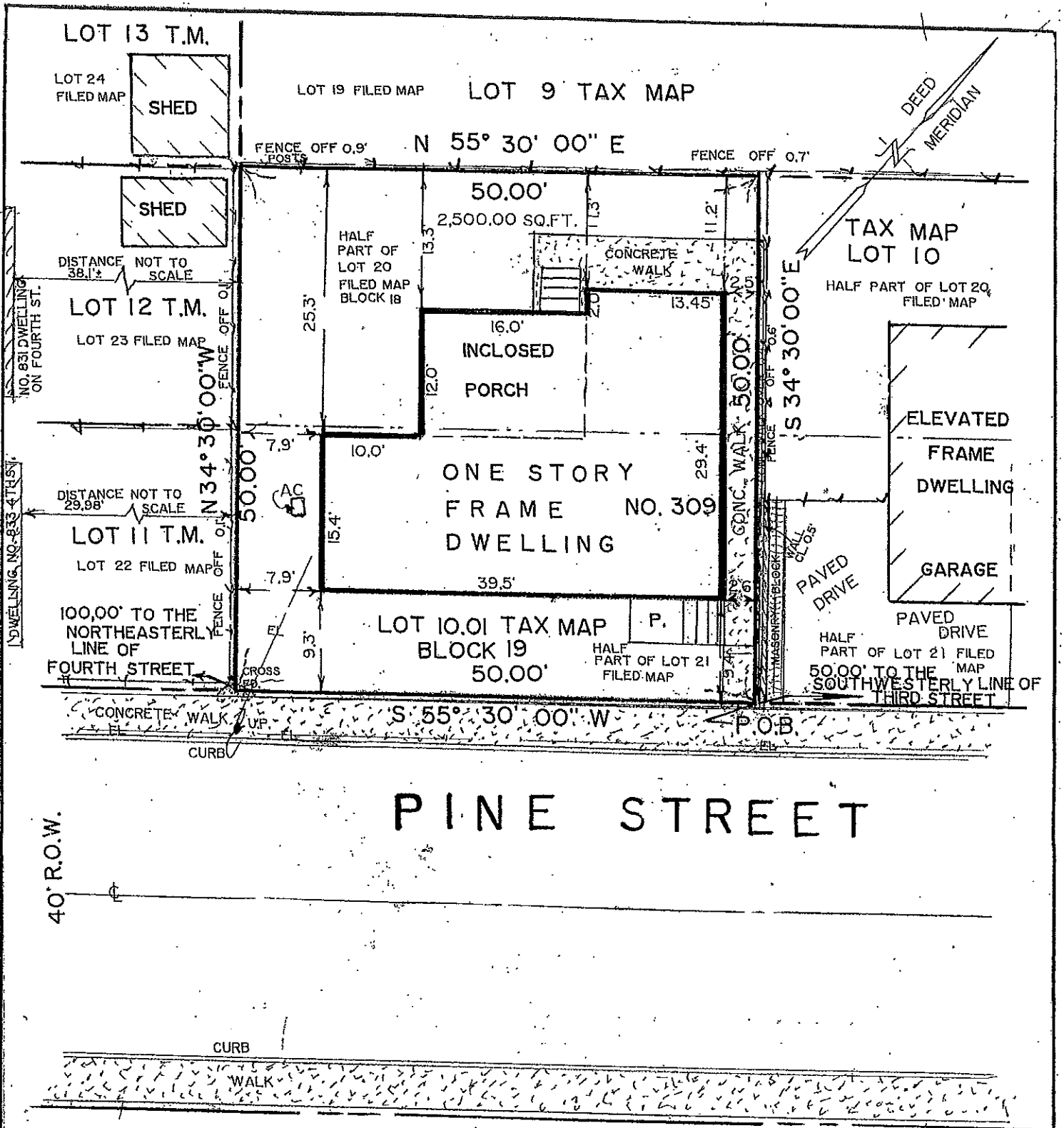
3 REAR ELEVATION  
Scale: 1/4" = 1'-0"

4 LEFT SIDE ELEVATION  
Scale: 3/8" = 1'-0"



1 FRONT ELEVATION  
Scale: 1/4" = 1'-0"

2 RIGHT SIDE ELEVATION  
Scale: 3/8" = 1'-0"



**FILED MAP REFERENCE:** The Property is also Known as the South Westerly Half Parts of Lot 20 and Lot 21 in Block 18 on Map Entitled, Map of Union Beach, Raritan Township (Union Beach Borough) Monmouth County, New Jersey, Dated March 1920 and Filed in the Monmouth County Clerk's Office on November 1, 1920 in Case 7-11

**NO. 309 PINE STREET**  
 LOCATION LAND SURVEY OF LOT 10.01  
 IN BLOCK 19 ON THE OFFICIAL TAX  
 MAP OF THE BOROUGH OF UNION BEACH